

### Topic

ComBridge BNG gateways from the ComBridge product range offer the possibility of an easy firmware upgrade without having to demount the devices. The update is performed via an integrated IP interface. Future developments or any adjustments that may be required can be easily imported via the IP connection.

This application note describes the process for updating a device.

### Change tracking

Firmware version 2.0.2 released on 2021-08-27

#### **Attention:**

This update requires a new ETS database entry of version 2. Please note that after this update all data will be reset and the configuration must be parameterized again with the new ETS application.

New Feature:

- Group and association extended to 512

Firmware version 2.0.0 released on 2021-05-25

#### **Attention:**

This update requires a new ETS database entry of version 2. Please note that after this update all data will be reset and the configuration must be parameterized again with the new ETS application.

New Feature:

- Text length for object designations: 48 characters
- ETS: The designation of the group addresses is to be taken over with the object designation in the parameter window.
- Cyclic KNX query of group address values (2 - 180min)
  - Definable value in case of malfunction
    - Last value
    - 0
    - 1
    - Maximum value in value range
- Extension EDE file generator: e.g. enter object name in "vendor-specific-address".
- Extension units at all DPT e.g. ppm at CO2 value transmission, etc.
- Firmware update deactivated by default, can only be activated via ETS.
- Web server can be activated or deactivated by parameter; default: deactivated.
- LongFrame support added

Improvements:

BugFixes: minor fixes

- When very large contents are requested that are much larger than 1476 bytes, the resulting "segmentation-not-supported" flag is not always sent: fixed.
- TPuart Treiber Problem fixed.
- ReadMultiple (all) on device objects can cause faulty response telegrams due to memory issues: fixed

Firmware version 1.2.0 released on 2017-01-25

New Feature:

- Registration as Foreign Device at BBMD

Improvements:

- BTL Certification successfully passed

## ComBridge BNG – Firmware Update 2.0.2

## Application Note

BugFixes: minor fixes

Firmware version 1.1.0 released on 2014-04-07

New Feature:

- EDE (Engineering Data Exchange) is added to webpage
- Webpage is UTF-8 coded. Description text entered using ETS4 (UTF-8) will be displayed correctly.

Improvements:

- Description "Revision No." has been replaced with "DB Revision No."

BugFixes:

- Property read on "object-list" works now correctly, even if communication objects in ETS has not been configured in order.

Firmware version 1.0.0 released on 2014-02-24

New Feature:

- Modified layout of webpage
- The KNX datapoint type "scaling" DPT 5.001 is now assigned to BACnet Type "percent" id=98

Improvements:

- In case of several COVs on the same object and a write request a COV notification is send to all other COV subscriber

BugFixes:

- Management of LTE telegrams improved

Firmware version 0.0.14 released on 2013-09-03

New Feature:

- Modified layout of webpage
- Additional information on web page:
  - Database revision
  - Device Status
  - Current Subscriptions
- Tunnel connection has got 15.15.255 as default address. This address is visible in a address scan as long as this tunnel address is different to the device physical address.

BugFixes:

- Transmit request on one opbject could cause a blocking transmission to Bacnet: fixed
- Timing for ReadRequest at startup improved

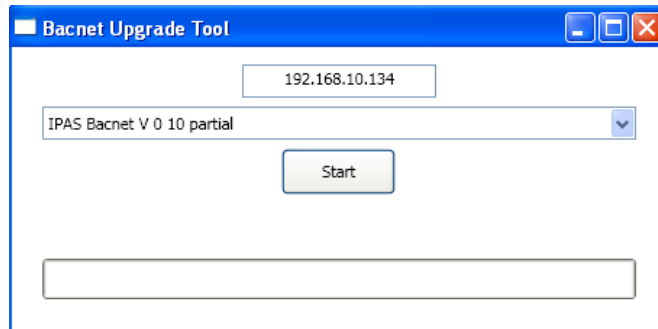
### Requirements for the firmware update

The firmware update is performed via IP. The device therefore needs to be integrated into an IP network. Once the power supply is connected, the device will be accessible via the IP preassigned with ETS. The actual update is performed via a connected PC with Windows XP, Win7.

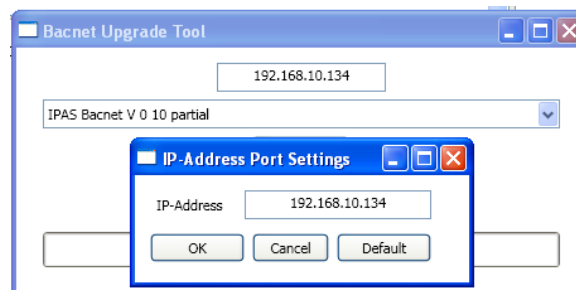
### Upgrade procedure

After the programme has been started the following entry window appears:

**ComBridge BNG – Firmware Update 2.0.2** **Application Note**



To start the upgrade, enter the IP address of the device that you would like to upgrade. Double-click on the displayed IP address (here 192.168.10.134) to open the entry field.



You can now edit the IP address and ensure it is correctly set to the value required. Press the OK button to transfer the address to the main window. Before you start the upgrade, please select the type of upgrade you would like to perform from the pull-down menu. The following types are available:

- ComBridge\_BNG\_Version\_unconditional or
- ComBridge\_BNG\_Version\_partial

If you select \_unconditional all data (ETS parameters, etc.) that may already be stored on the device are deleted and the physical address is re-set to 15.15.255. If you select the \_partial upgrade type, the configuration data is preserved and the device does not have to be re-loaded with the ETS.

After you have selected the type you need, press the start button to begin the upgrade process

The upgrade tool first checks the current firmware version of the ComBridge BNG gateway and informs the user via an information window of the firmware version that has been used up to now.



After acknowledgement the firmware data are transferred to the device memory. A progress indicator informs about the current status of the transfer. Once the upgrade files have been successfully transferred, a device reset is required.

After the reset the device starts with the new firmware version.